

### Installing the Pop-up Escutcheon:

1. Remove the upper deck assembly #30 through #32 from the threaded pop-up waste body #26.
  - a. Adjust the cone washer #29, plastic friction washer #28 and mounting nut #27 and install the assembly from the below the sink.
  - b. Install the pop-up escutcheon #31 with the rubber washer #30 from above the sink.
    - i. Note: Sealing, water proof, silicone may be needed to make a seal in the sink. (Not included.)
2. Tighten the cone washer #29, plastic friction washer #28 and mounting nut #27.  
**Do not over tighten.**
3. Install the horizontal pop-up rod into the washer fitting.
  - a. Note: the knurled cap nut #22 has a two-piece plastic seal #23 and #24 for the horizontal pop-up rod ball fitting. Install the ball in-between the two pieces #23 and #24 and tighten. **Do not over tighten.** Over tightening may cause a stiff pop-up rod assembly.
4. Connect the horizontal pop-up rod to the decorative vertical pop-up rod #18 using the brass Connector #20.

### After Installation

1. Test each side valve for leaks at each connection.
2. Test the pop-up escutcheon for leaks with the water running.

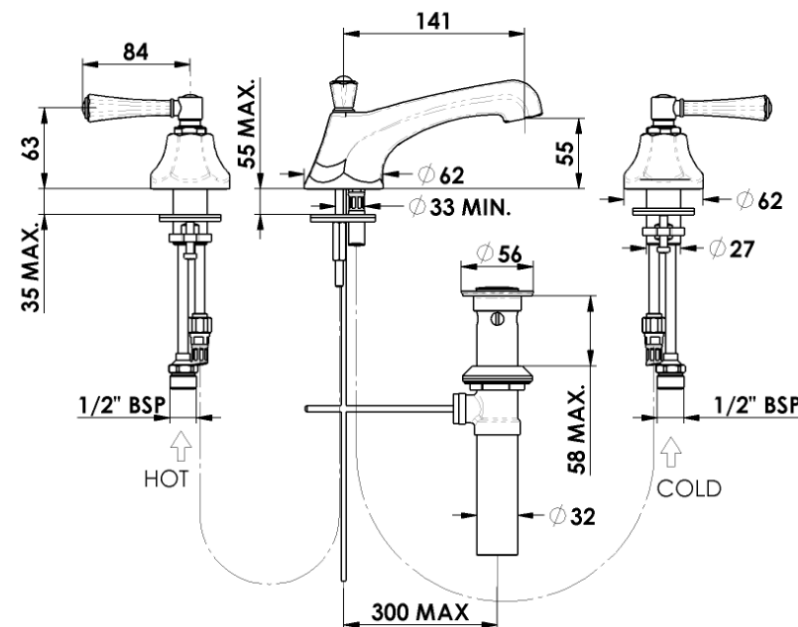
**Distributed by: Greens Global Limited**  
PO Box 5055, Hamilton, 3200  
22 The Boulevard, Te Rapa, Hamilton 3200  
Phone: 07 849 0109, Fax: 07 849 0540  
Website: [www.greenstapware.com](http://www.greenstapware.com)  
Email: [nzsales@greenstapware.com](mailto:nzsales@greenstapware.com)  
**Service Hotline: 0800 655 455**

**PRODUCT #**

**BATCH #**



## POLARO DECK MOUNTED 3 HOLE BASIN FAUCET WITH POP UP (For All Pressure Installations) INSTALLATION INSTRUCTIONS



### ATTENTION PLUMBER

To ensure the optimum performance and customer satisfaction please adhere to the following:

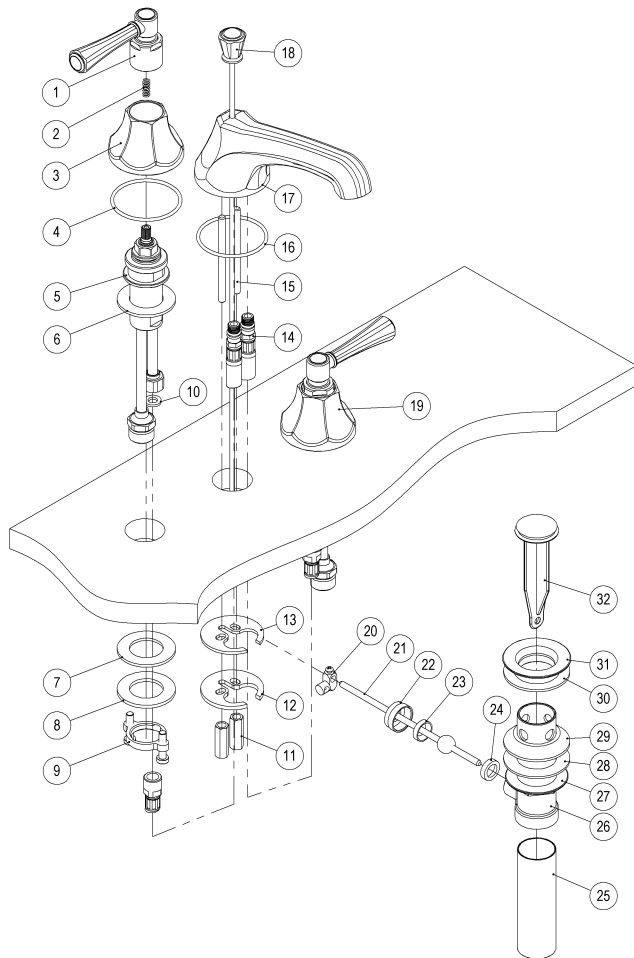
- Flush out all pipe work prior to installation
- Installation shall be in accordance with the AS/NZS3500 series of standards.  
**The maximum operating pressure within any building should not exceed 500kpa.**  
Pressure above 500kpa can cause damage from water hammer, reducing life of appliances, taps and fittings and cause excessive noise in the plumbing system.
- Pressure over 500kPa will require a limiting valve.
- Inline filters must be installed on both hot and cold supplies.

### TECHNICAL DATA

- Minimum Water pressure for satisfactory operation: 35Pa
- Maximum Water pressure: 500kPa
- Maximum hot water temperature: 70°C  
If the Water temperature exceeds 70°C an approved Tempering Valve must be fitted.
- The flow rate of the sink and basin mixers has been rated under the NZ Water Efficiency Labeling Scheme (WELS).

Please leave this form with the product once installed.

For full warranty terms and conditions, please see the warranty card enclosed with this product or visit [www.greenstapware.com/warranty-and-care/](http://www.greenstapware.com/warranty-and-care/)



|    |                        |
|----|------------------------|
| 1  | LEVER                  |
| 2  | SPRING                 |
| 3  | ESCUTCHEON             |
| 4  | 'O' RING               |
| 5  | SIDE VALVE             |
| 6  | RUBBER WASHER          |
| 7  | RUBBER WASHER          |
| 8  | STEEL WASHER           |
| 9  | MOUNTING NUT           |
| 10 | RUBBER WASHER          |
| 11 | THREADED NUT           |
| 12 | CRESCENT STEEL WASHER  |
| 13 | CRESCENT RUBBER WASHER |
| 14 | M10-M15 HOSE           |
| 15 | MOUNTING STUDS X 2     |
| 16 | 'O' RING               |

|    |                             |
|----|-----------------------------|
| 17 | LAVATORY DECK MOUNTED SPOUT |
| 18 | POP-UP WASTE ROD            |
| 19 | HANDLE ASSEMBLY             |
| 20 | BRASS CONNECTOR             |
| 21 | JUMPER POLE                 |
| 22 | KNURLED CAP NUT             |
| 23 | BREARING WASHER             |
| 24 | BREARING WASHER             |
| 25 | TAIL TUBE                   |
| 26 | POP-UP WASTE BODY           |
| 27 | MOUNTING NUT                |
| 28 | PLASTIC FRICTION WASHER     |
| 29 | CONE WASHER                 |
| 30 | UPPER RUBBER WASHER         |
| 31 | POP-UP ESCUTCHEON           |
| 32 | JUMPER                      |

## Installation Instructions

Flush out all pipework to remove any foreign material.

The **hot supply** should be fitted on the **left** when viewed from the front.

### Installing Hot & Cold Side Valves and Trim: (2 x 33mm cut-outs)

- Remove trim parts #1 through #3.
  - Note: Removing the lever requires **downward pressure** on the lever and turning the locking nut under the lever.
    - Note: Spring #2 inside the lever.
  - Remove mounting nut #9, steel washer #8 and rubber washer #7.
- Install the side valve #5 from the top of the deck.
  - Install mounting nut #9, steel washer #8 and rubber washer #7 from below the deck.  
Do not over tighten.
  - Install the escutcheon #3.
    - Note: Escutcheon #3 has a pre-set height for fitting. Please set the escutcheon to the pre-set height.
  - Install lever #1, as shown.
    - Check the spring #2** is inside the lever.
    - With **downward pressure** on the lever tighten the locking nut under the lever.
  - Position the lever and escutcheon and tighten the jack screws.
- Make the connection to the supply lines to the hot and cold connections (Hoses not included.)

### Installing the Spout: (33mm cut-out)

- Hand tighten the supply lines #14 into the spout.
- Note: Do not over tighten. Do not crush the fitting.
- Install the **two** mounting studs #15 securely.
- Position the deck o-ring #16 on the spout and install the spout.
- Install the crescent steel washer #12 and crescent rubber washer #13.
- Position the spout, and tighten the **two** threaded nuts #11.
- Connect the flexi hose #14 to side valve connection #5 ensuring the #10 rubber washer is in place. **Turn the nut and not the hose.** Twisting the hose may cause damage, or low flow.